

STATURe[®]



The Advanced 3-Way Herbicide Mix

LOWER RATES

NO SMELL

TURF SAFETY

LESS CHEMICAL



COLIN CAMPBELL (CHEMICALS) PTY LTD • (02) 9725 2544
HORTICULTURE • POST HARVEST • TURF

80 Years in 2020 • Est. 1940 • campbellchemicals.com.au
100% Australian owned & operated.



STATURE®

At a glance

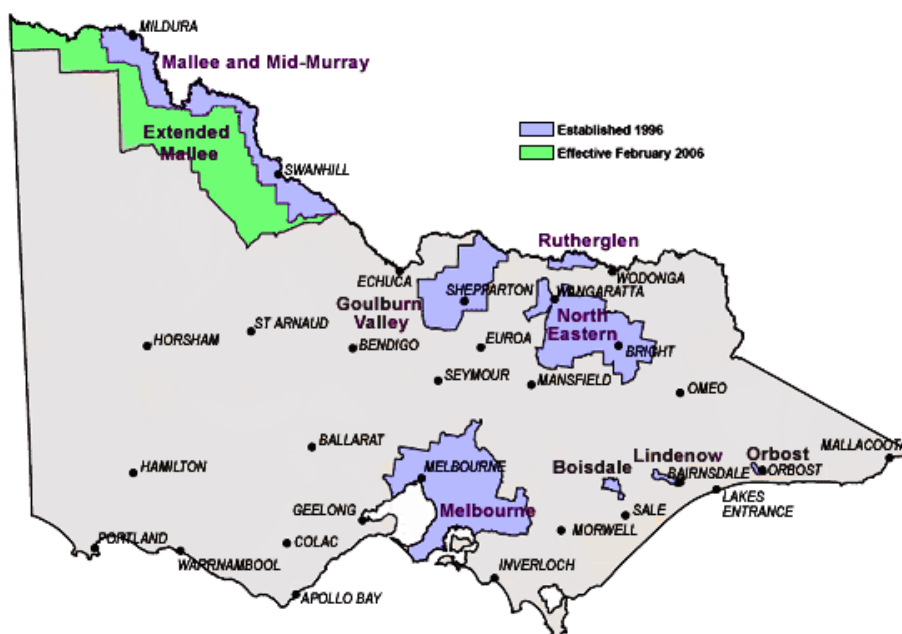
Product Name:	STATURE®
Type:	Herbicide
Active Constituent:	250g/L MCPA present as the ethyl hexyl ester
	150g/L Bromoxynil present as the octonate
	25g/L Diflufenican
Resistance	FCI
Groupings:	
Formulation:	Emulsifiable Concentrate (EC)
Pack Size:	5L
Mode of action:	contact & systemic

STATURE is a brand new 3-way broadleaf herbicide for use in turf management. STATURE brings together 3 powerful active ingredients used in turf before but never together and never with this of formulation.

The MCPA and Bromoxynil have been reliable and effective herbicides for many years. Diflufenican brings a systemic and residual control of weeds. The formulation is an advanced Emulsifiable Concentrate (EC) which allows for:

- More effective control of weeds with these actives in the EC formulation.
- It superchargers each active ingredient without compromising safety on turf
- Allows low flexible rates to be used

PLEASE NOTE
STATURE® IS SUBJECT
TO ESTER EXCLUSION
ZONES. CHECK UNDER
AGRICULTURE VIC FOR
FULL DETAILS AND
AREAS. THE MAP IS
CURRENT AT TIME OF
PRINTING (JUNE 2021)



WEED SPECTRUM OF STATURE®

Weeds Controlled	Rate/ha	Critical Comments
<p>Broadleaf weeds including: <i>Bindii (Soliva sessilis)</i>, <i>Creeping Oxalis (Oxalis corniculata)</i>, <i>Cudweed (Gnaphalium spp.)</i>, <i>Tridax Daisy (Tridax procumbens)</i>, <i>White Clover (Trifolium repens)</i></p> <p>Suppression only: <i>Caustic Weed (Chamaesyce prostrata)</i>, <i>Cobbler's Peg (Bidens pilosa)</i>, <i>Creeping Indigo (Indigofera spicata)</i>, <i>Plantain (Plantago lanceolata)</i></p>	2L	<p>Apply to actively growing weeds. Complete control may take 4 to 6 weeks, depending on weed growth stage at application and also air and soil temperature. A repeat application maybe needed in 4 – 6 weeks if lower rates are used in high weed pressure situations or during extended germination periods due to environmental conditions. Use a surfactant for difficult to wet weeds. Apply higher rates for higher weed density and growth stage or abnormal weed growth (including early flowering), late season germinations. Application volume: Apply in 200 to 500 L of water. Transient discolouration may occur up to 21 days following application. Varietal differences in certain buffalo grasses (e.g. ST85) may produce more pronounced effects and it is recommended that small areas be tested for turf safety before large-scale application occurs. Avoid exceeding application rates through overlapping sprayed areas</p>
<p>Weeds controlled up to 4-8 leaf stage (up to 180 mm in diameter): <i>Wild Radish (Raphanus raphanistrum)</i></p> <p>Weeds controlled up to 4 leaf stage (not more than 120 mm in diameter): <i>Capeweed (Arctotheca calendula)</i></p> <p>Weeds controlled up to 6 leaf stage: <i>Prickly Lettuce (Lactuca serriola)</i></p>	500mL to 1L	
<p>Weeds controlled up to 2-4 leaf stage: <i>Crassula (Crassula spp.)</i></p>	500 to 750mL	
<p>Weeds controlled up to 2 leaf stage: <i>Corn Gromwell (Buglossoides arvensis)</i>, <i>Saffron Thistle (Carthamus lanatus)</i>, <i>Sorrel (Rumex spp.)</i>, <i>Toad Rush (Juncus bufonius)</i></p> <p>Suppression only: Weeds controlled up to 2 leaf stage: <i>Dock (Rumex spp.)</i>,</p> <p><i>Marshmallow (Malva parviflora)</i>, <i>Scarlet Pimpernel (Anagallis arvensis)</i>, <i>Vetch (Tares) (Vicia sativa)</i></p> <p>Weeds controlled up to 4 leaf stage: <i>Fireweed (Senecio spp.)</i>, <i>Mouse-eared Chickweed (Cerastium glomeratum)</i></p>	1L	

THE POWER OF 3 IN STATURE®

The following table explains how each of STATURE's 3 ingredients and 3 modes of action work to kill weeds as listed on the label.

Parameter	Diflufenican	Bromoxynil	MCPA
HRAC MOA Group	F	C	I
Active ingredient (g/L)	25g/L	150g/L	250g/L
Activity	Systemic	Contact	Systemic
Plant Uptake	Foliar, roots, shoots	Foliar	Foliar
Translocation	Xylem, limited	Limited	Extensive
Visual Symptoms	Bleaching of younger leaves death to older leaves first	Blisters / necrotic areas on leaves,relatively rapid burndown	Twisting / distortion of stems and leaves
First Symptoms seen	Within 7 days		

BEST RESULTS WITH STATURE®

- Do NOT apply if frost is likely after application as this can cause injury to desired turf species.
- Do NOT apply if temperatures are likely to be above 24°C after application
- Make sure soil is not water logged as this can cause to herbicide injury.
- Make sure weeds are actively growing to ensure best results.
- Make sure turf is not drought or heat stressed as STATURE will not be taken up.
- STATURE® is safe on all cool and warm season grasses. However you need to make sure turf is well established before any application is made.
- Use of a non ionic surfactant is recommended such as Filmstar® @ 300mL/ha
- STATURE® is compatible with a number of other herbicides. Contact Colin Campbell (Chemicals) for more information)

Seeding Intervals:

Rate 1L rate = 4 weeks before any seeding can take place

Rate 2L rate = 8 weeks before any seeding can take place.

LESS CHEMICAL LOADING OF STATURE®

Product	Active Ingredient					Highest Label Rate	Total ai per hectare combined	Odour
	MCPA	Diflufenican	Clorpyralid	Bromoxynil	Dicamba			
STATURE®	500	50		300		850	2L	NO
Spearhead®/ Stadium®	1500	75	100			1675	5L	NO
Fairway®	1400			700	200	2300	5L	YES
Kamba® M	2210				520	2730	6.5L	YES
Bronco® MA-X	1400			1400		2800	4.3L	YES

STATURE only puts out 50% of chemical per hectare of its nearest competitor

OTHER HERBICIDE OPTIONS IN OUR RANGE



Active Ingredients of **Methar Tri Kombi**
336g/L Mecoprop, 80g/L 2,4-D, 40g/L Dicamba

Weeds controlled:
Various Broadleaf Weeds



Active Ingredients of **Sportsground**
336g/L Mecoprop, 80g/L MCPA, 40g/L Dicamba

Weeds controlled:
Various Broadleaf Weeds



Active Ingredient: 175g/L Endothal
Pack size: 5L, 1L

Weed controlled:
Wintergrass (*Poa annua*)



Active Ingredient: 240g/L Methiozolin
Pack size: 500mL

Weed controlled:
Wintergrass (*Poa annua*)



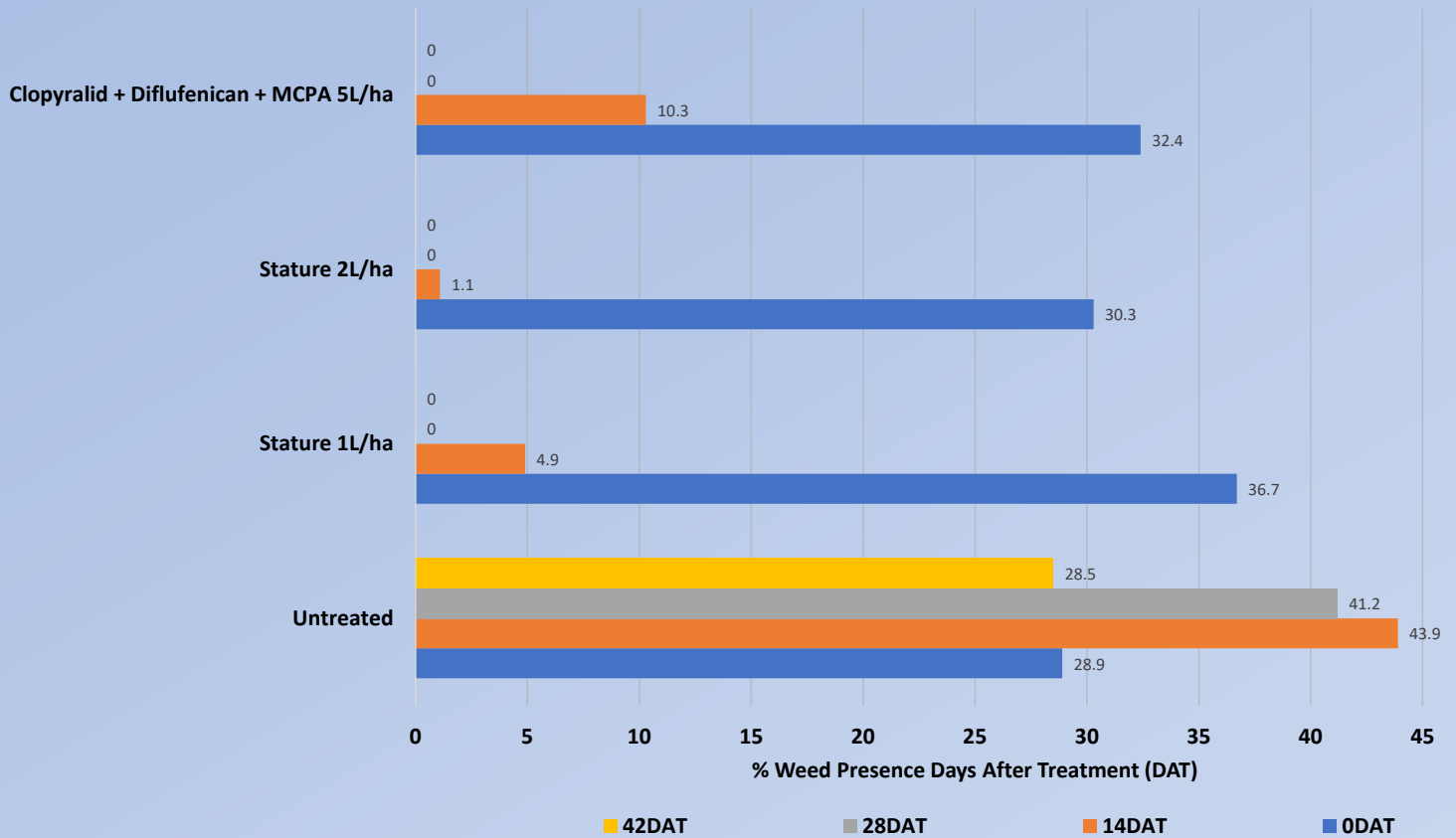
Active Ingredient: 220g/L DSMA
Pack size: 10L

Weeds controlled:
Paspalum, Summergrass, Crab Grass,
Sedges, Nut Grass, Mullumbimby Couch

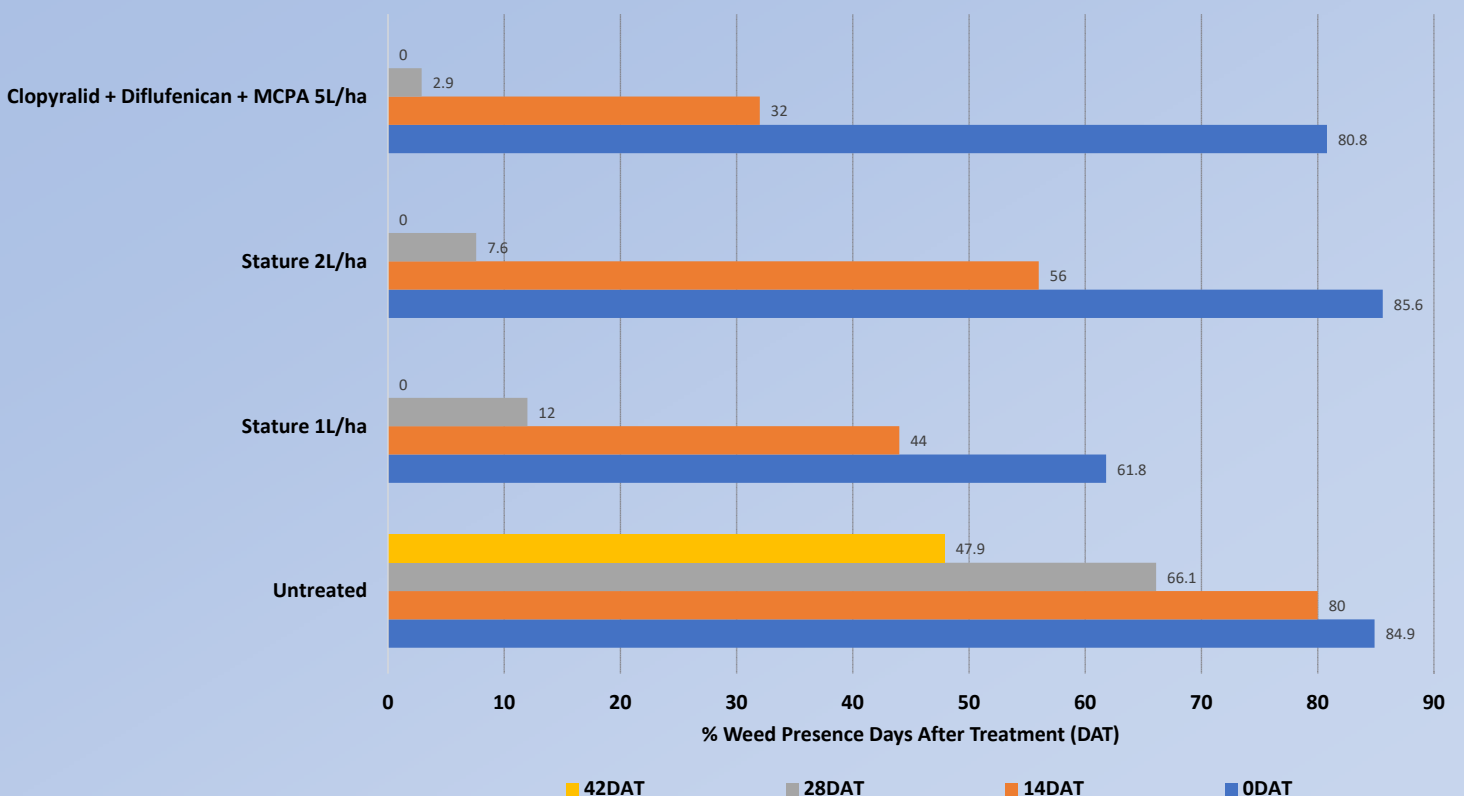
SELECTED TRIAL WORK

As seen in each trial STATURE performed just as well as standard herbicides used at both the 1L & 2L rate per hectare. Additionally when compared against Iodisulfuron methyl and Trifloxysulfuron sodium STATURE killed weeds statistically quicker within a 28 day period

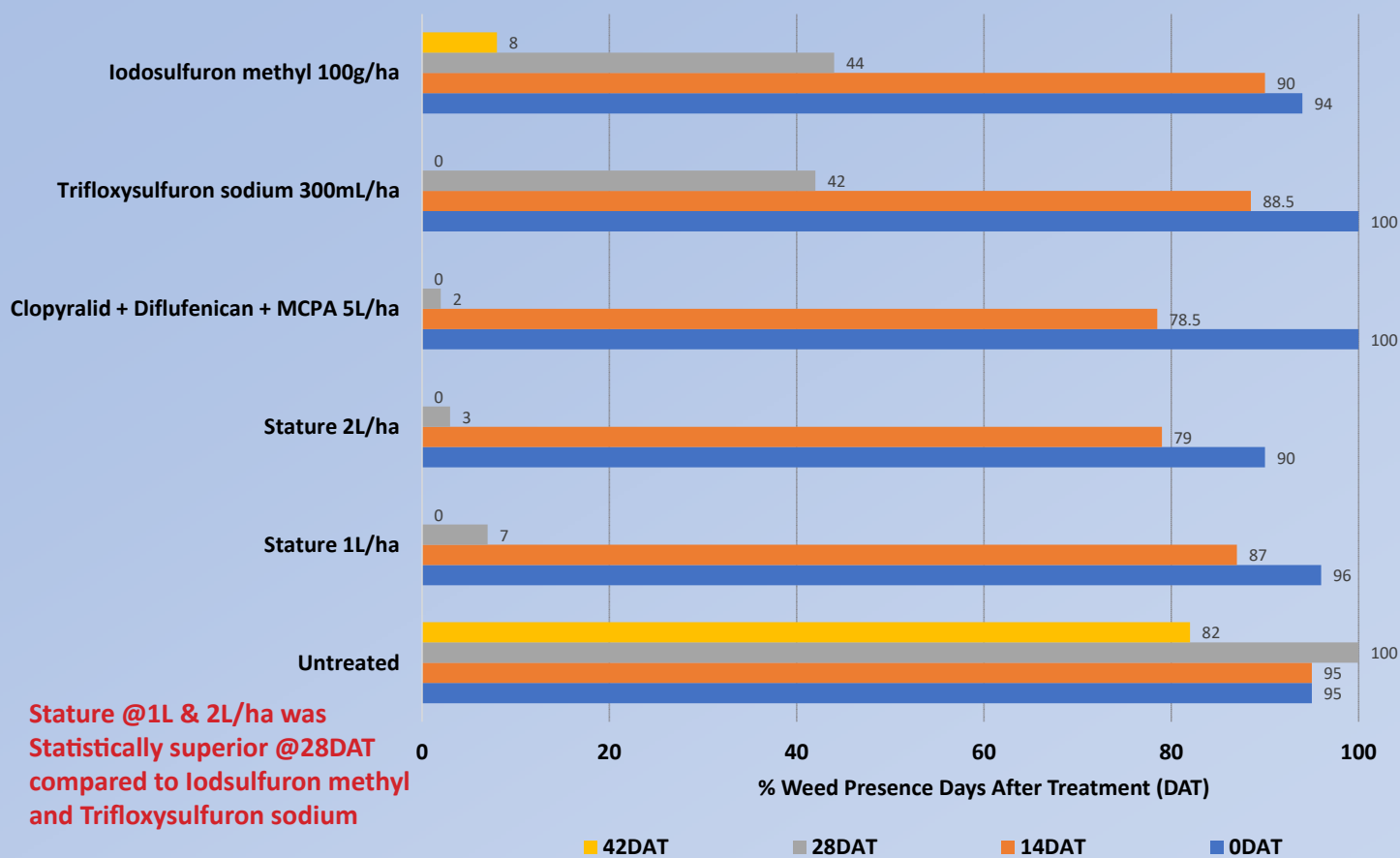
Weed Control Bindii (Green Couch)



Weed Control White Clover (QLD Blue Couch)



Weed Control Bindii (QLD Blue Couch)



Turf Species STATURE® has been tested on and showed no adverse effects

QLD Blue Couch	Sir Walter Buffalo	Mackenzie Bentgrass (not greens HOC)
Grand Prix Couch	Palmetto Buffalo	Browntop Bentgrass (not greens HOC)
Legend Couch	Shademaster Buffalo	Penncross Bentgrass (not greens HOC)
Oz Tuff	Seashore Paspalum	
Santa Ana Couch	Perennial Ryegrass	
Windsor Green Couch	Tall Fescue	
Wintergreen Couch	Zoysia	

For any varieties not mentioned on the list please contact Colin Campbell (Chemicals) for more information. We do not recommend bentgrass greens use.

80 years and growing



Horticulture

Post Harvest

Turf

Colin Campbell (Chemicals)

100% Australian Owned

Established 1940

www.campbellchemicals.com.au



@campbellturf



Colin Campbell Chemicals



@campbellchemicals



@campbellchemicals